



CONTAINER BUILDING & ROUNDHOUSE WORKS VISUAL STORY

What to expect when you visit the Roundhouse offices in the heart of Camden



Contents

- Access to the Container Building Offices**
- Access to Roundhouse Works**
- Blue Badge Parking**
- In case of Emergency**
- Access via the Main Building**
- Transport Routes**

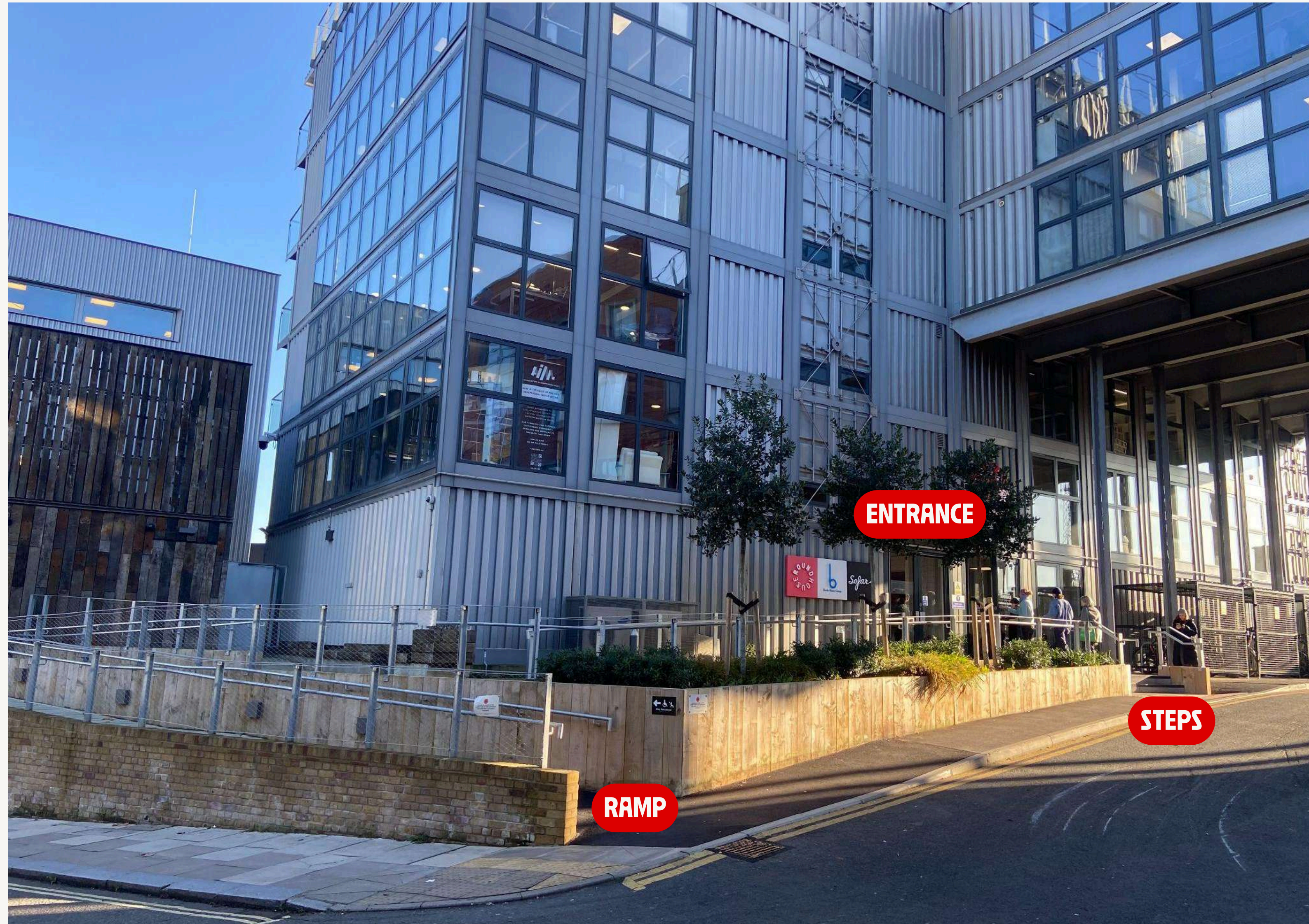
WHAT'S ON

THE CADILLAC THREE	CONFIDENCE MAN
VANN TIENSEN	CREEPER
COCK SPARRER	TOVE LO
BANKS	MUNA
GOK WAN	JULIA JACKLIN
MIDGE URE	DEAF HAVANA
THE LEMONHEADS	PITCHFORK MUSIC FESTIVAL
MAXIMO PARK	BELLE AND SEBASTIAN
THE MENZINGERS	THE MOUNTAIN GOATS
GODSMACK	EZRA FURMAN
PUP	SOHN
INHALER	SAXON
THE AMAZONS	EARTHGANG
SPORTS TEAM	POWERWOLF
PAVEMENT	THE HU
GREGORY ALAN	NEW MODEL ARMY
ISAKOV	JOEY BADASS
DMA'S	SOUL II SOUL
BAND OF HORSES	CLUTCH
MILKY CHANCE	
BILL CALLAHAN	

"London's most loved live music venue"
Time Out

WILLOW CIRCUS & T-PONCE PRESENTERS
A space for the next generation of creatives

OUR OFFICES



**The Roundhouse
Container Building
can be located at:**

**212 Regent's Park
Road, Chalk Farm,
London, NW1 8AW**

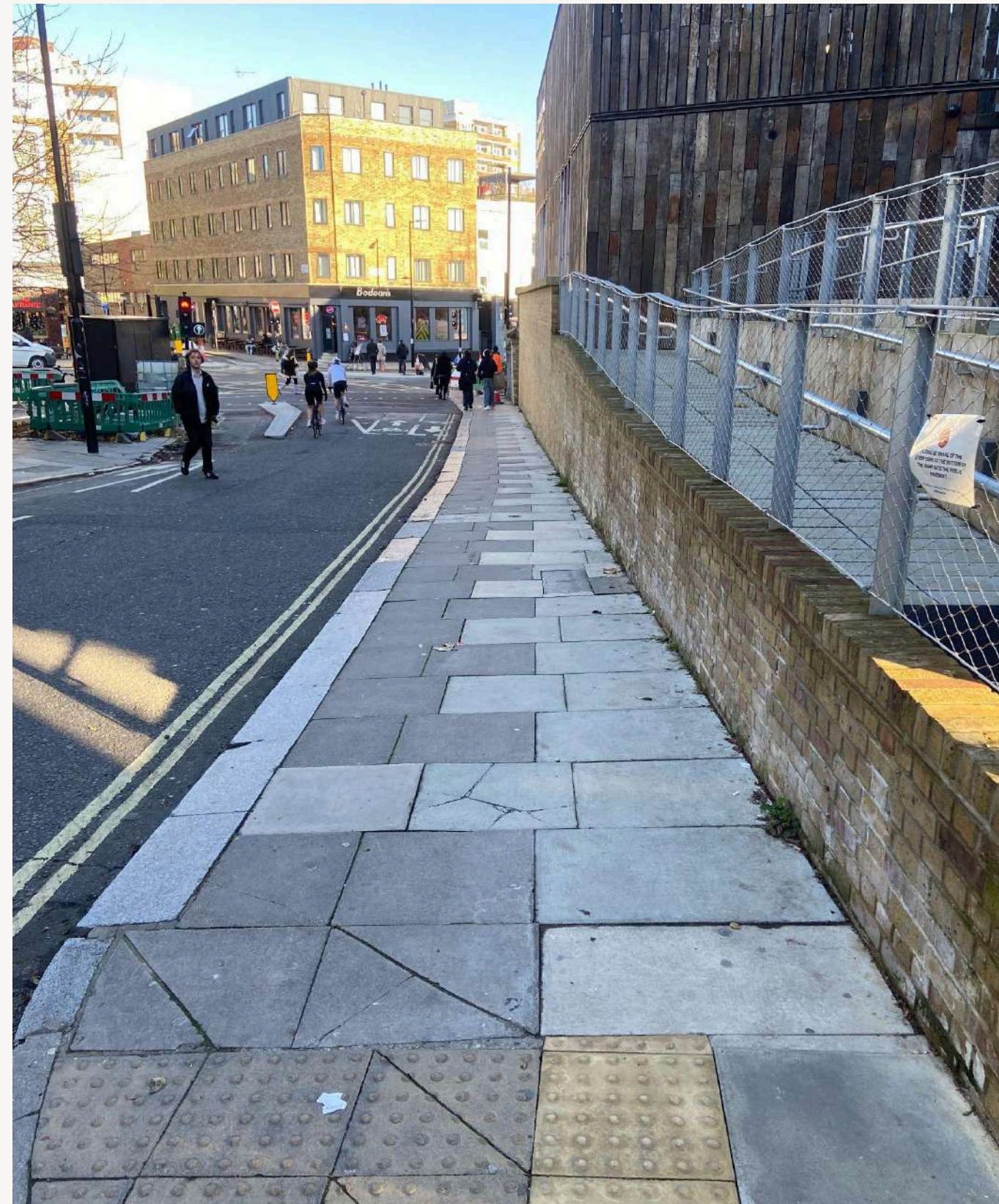
**whatthreewords
engine.react.oval**

YOUR APPROACH

The view as you travel **uphill**
on Regent's Park Road
towards the Roundhouse
Container Building



The view as you travel
downhill on Regent's Park
Road towards the
Roundhouse Main Building



**The gradient on
Regents Park
Road is steep
and may not be
suitable for all
wheelchair users**

Corner bend onto the ramp

Once you get to the opening of the ramp you'll need to navigate a corner bend photographed below.



There is a lip on the pavement corner



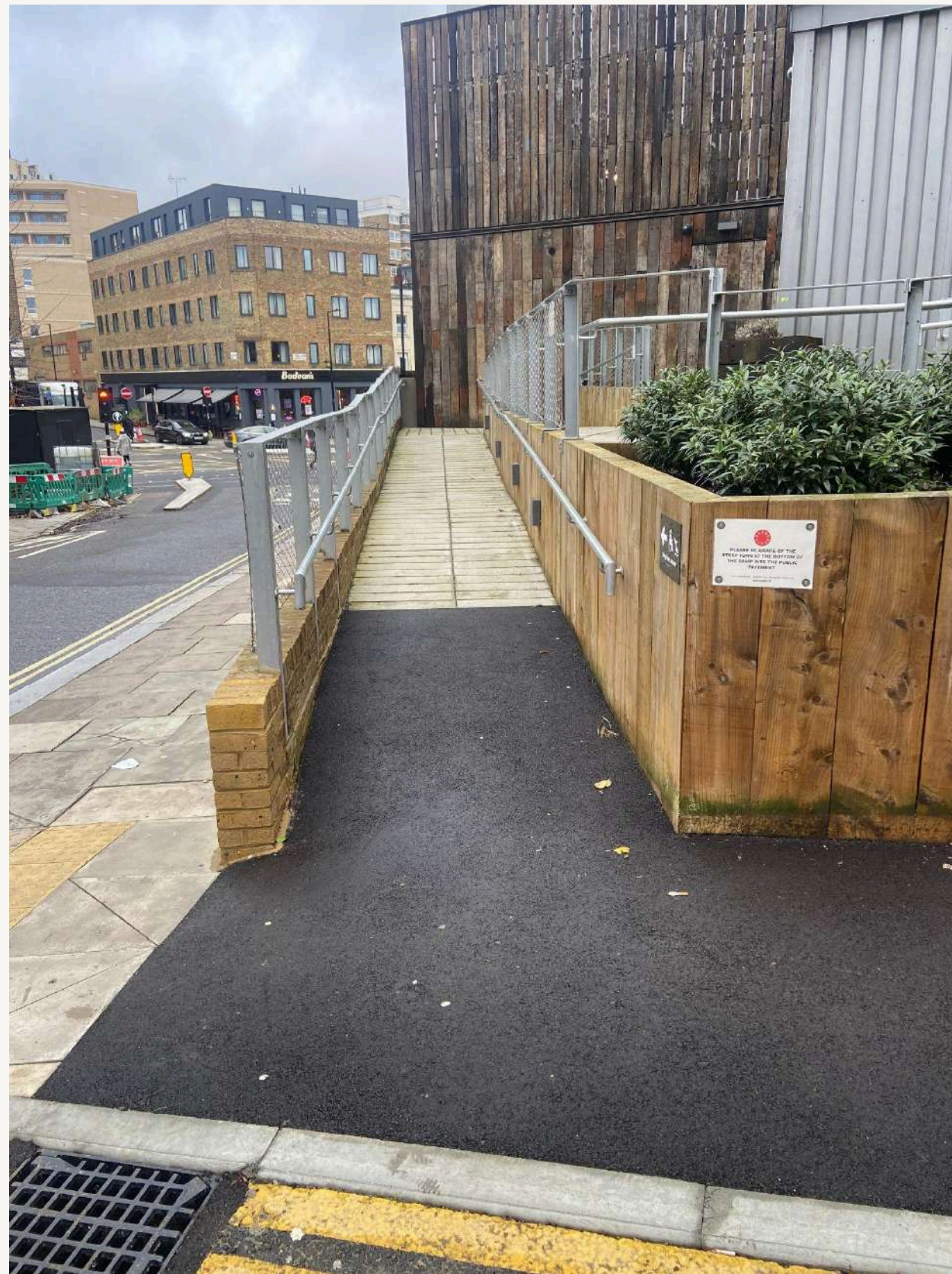
This corner is on an uphill bend

Ramp Corner Measurements



Ramp Measurements

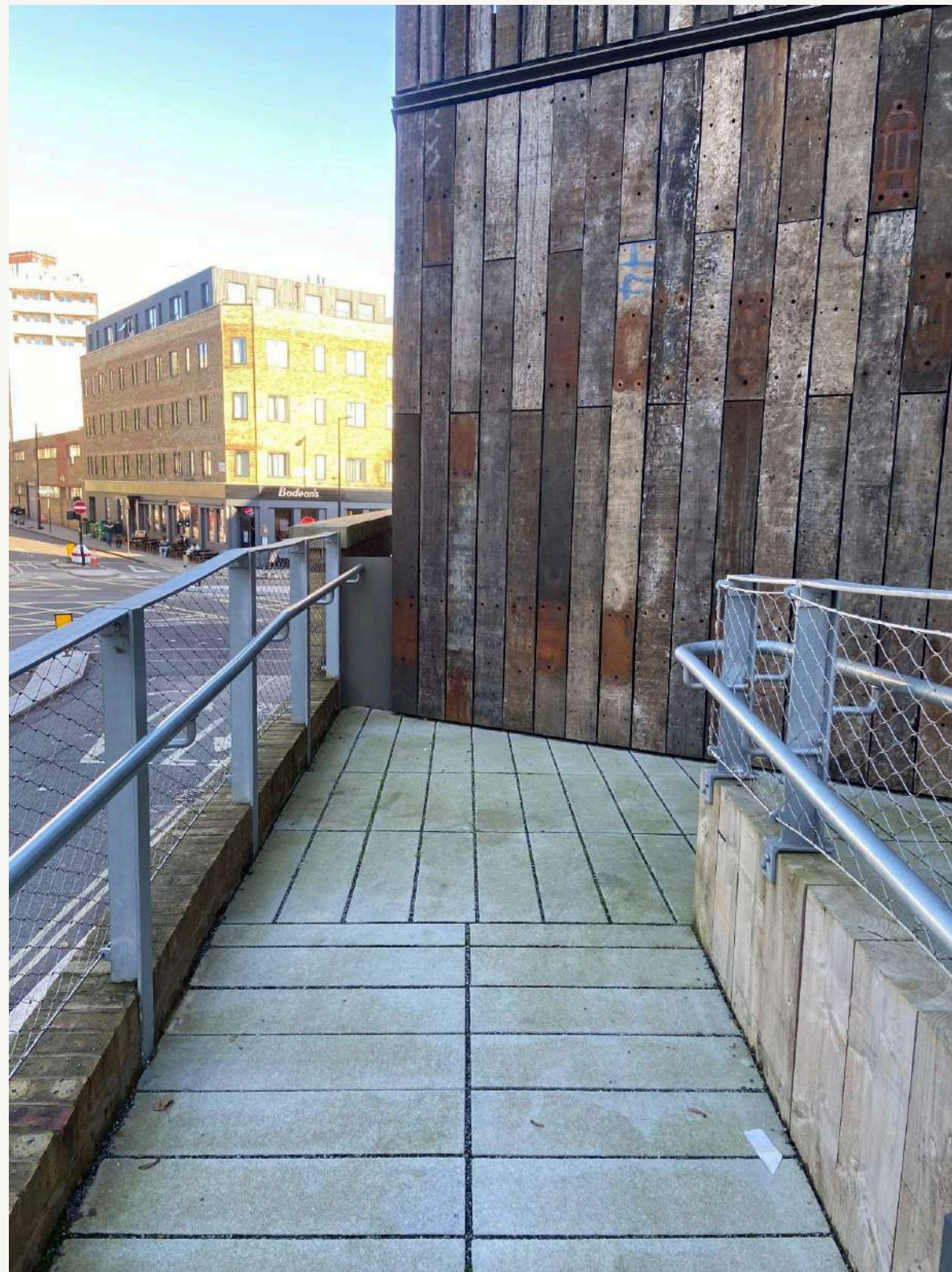
Traveling up the ramp towards
the Roundhouse Container Building



There
is an
uphill
gradient

Ramp Measurements

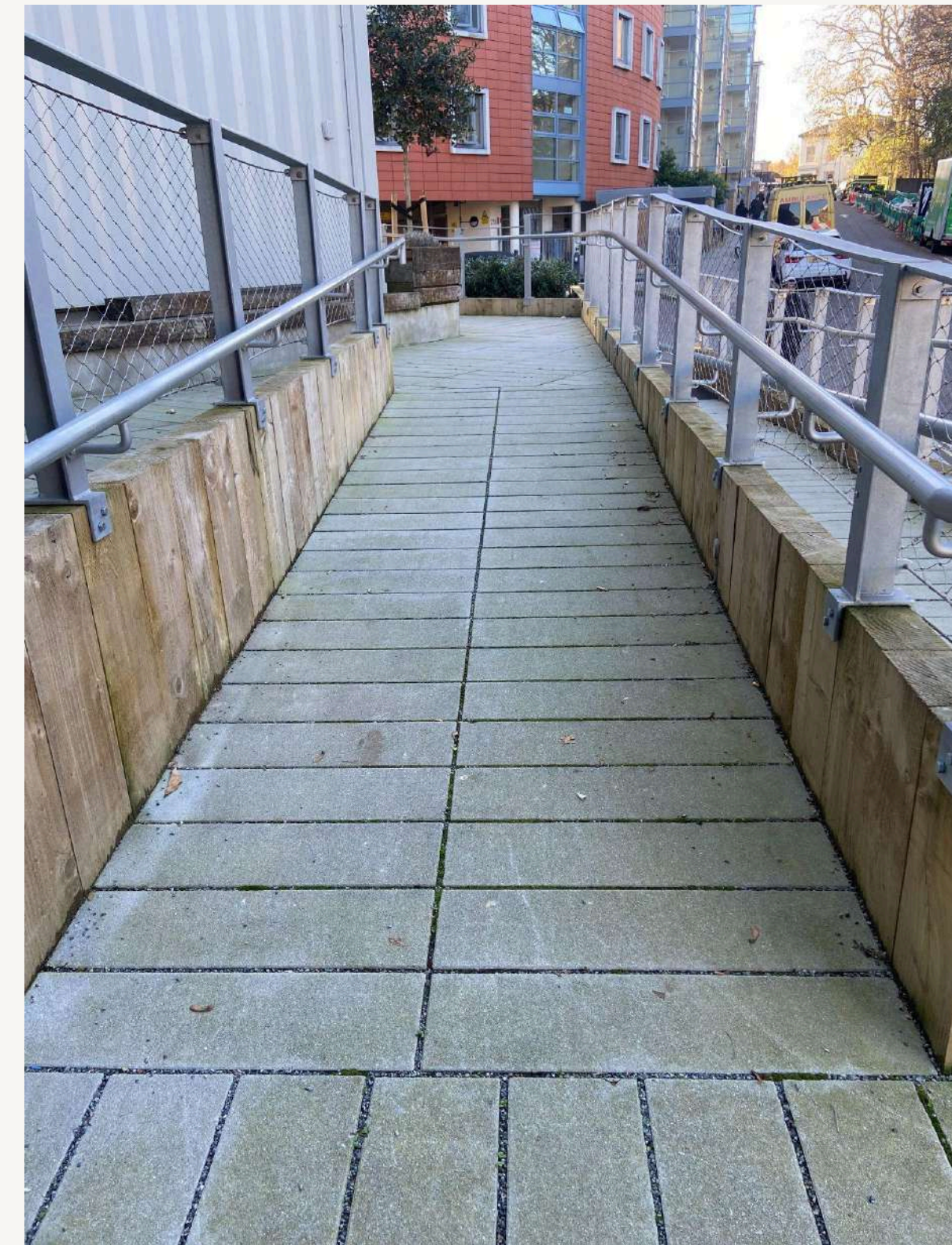
Traveling up the ramp towards
the Roundhouse Container Building



First landing



Wide corner bend



Second ramp

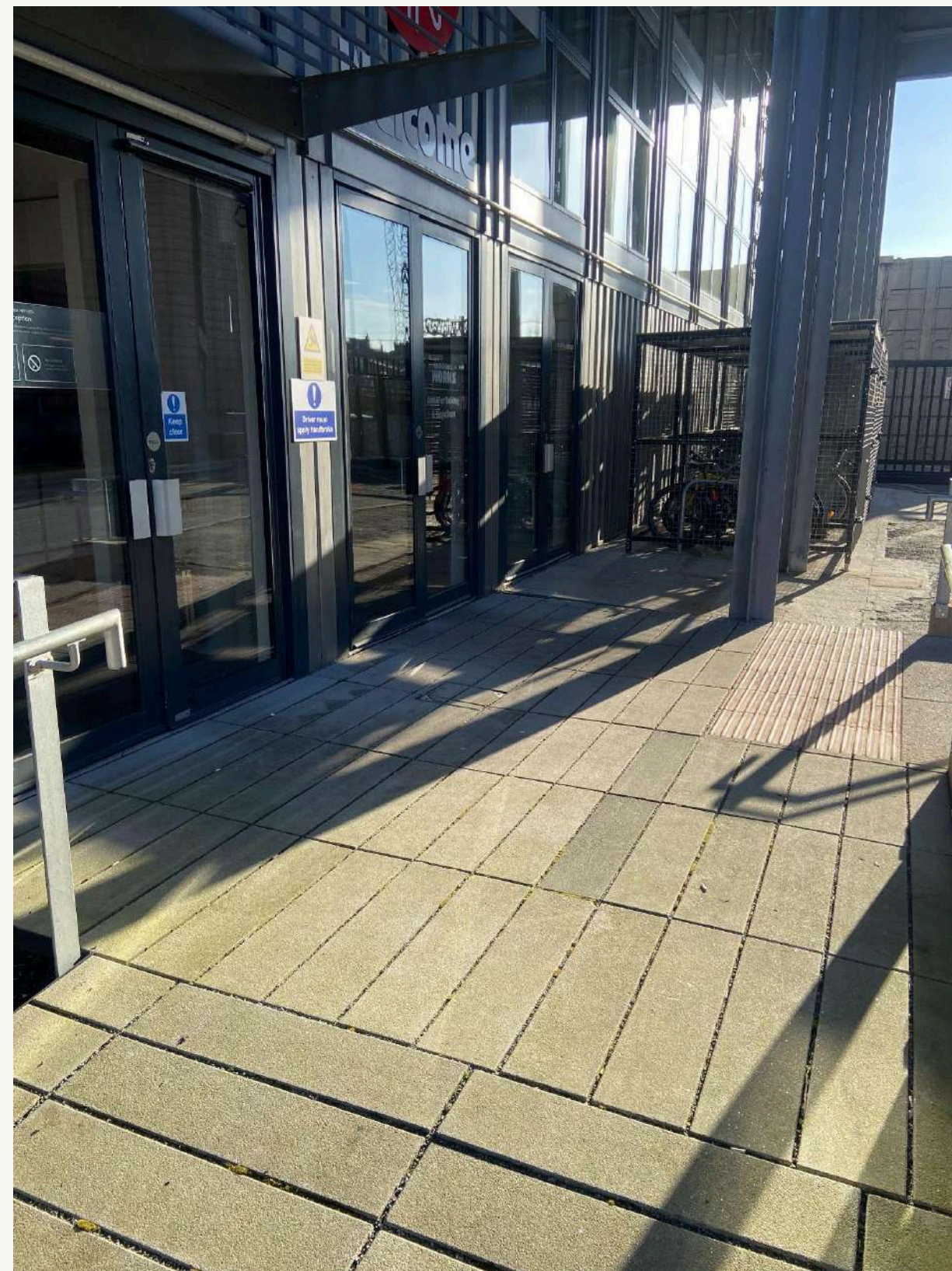
Ramp Measurements

Traveling up the ramp towards
the Roundhouse Container Building



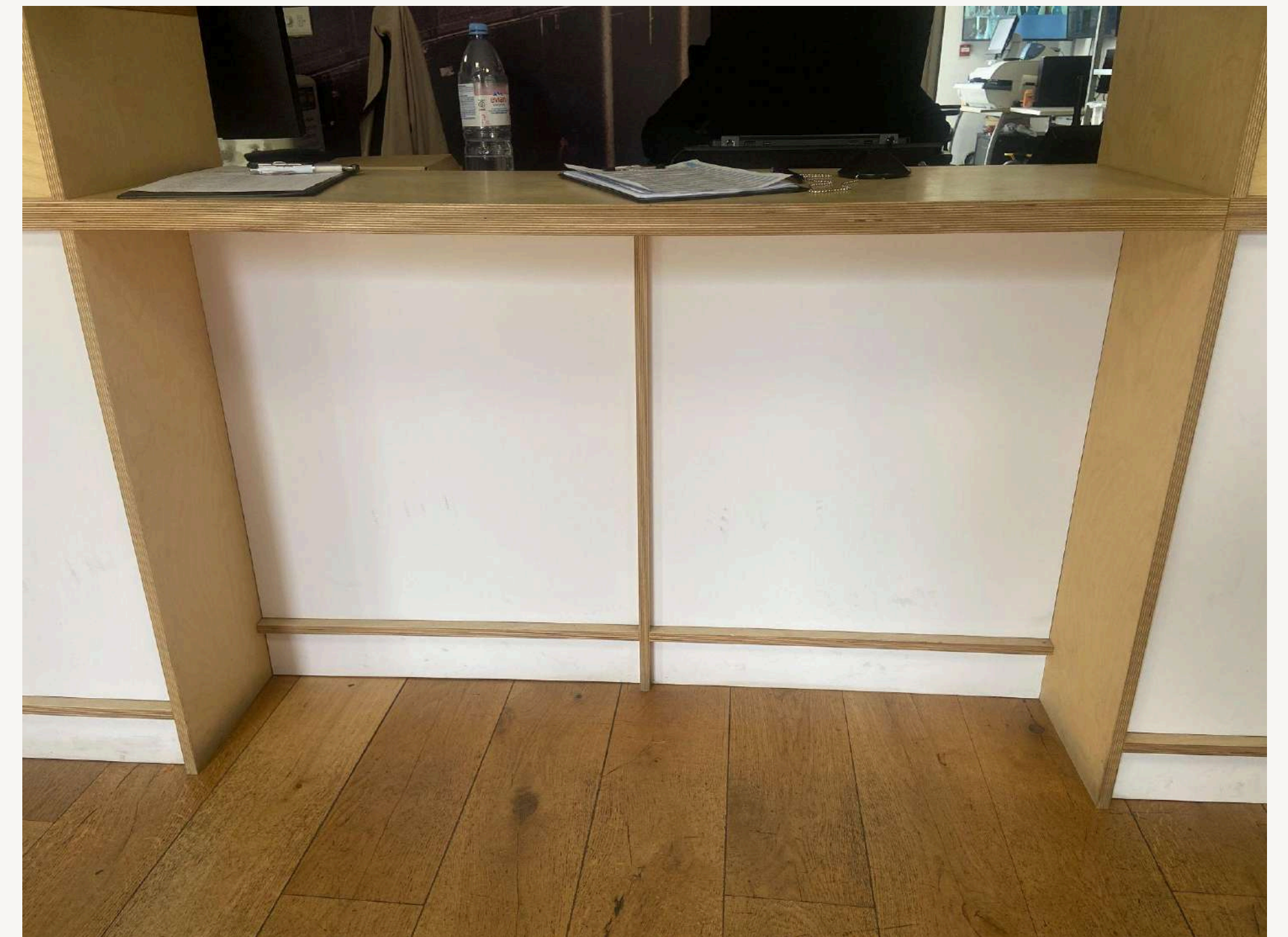
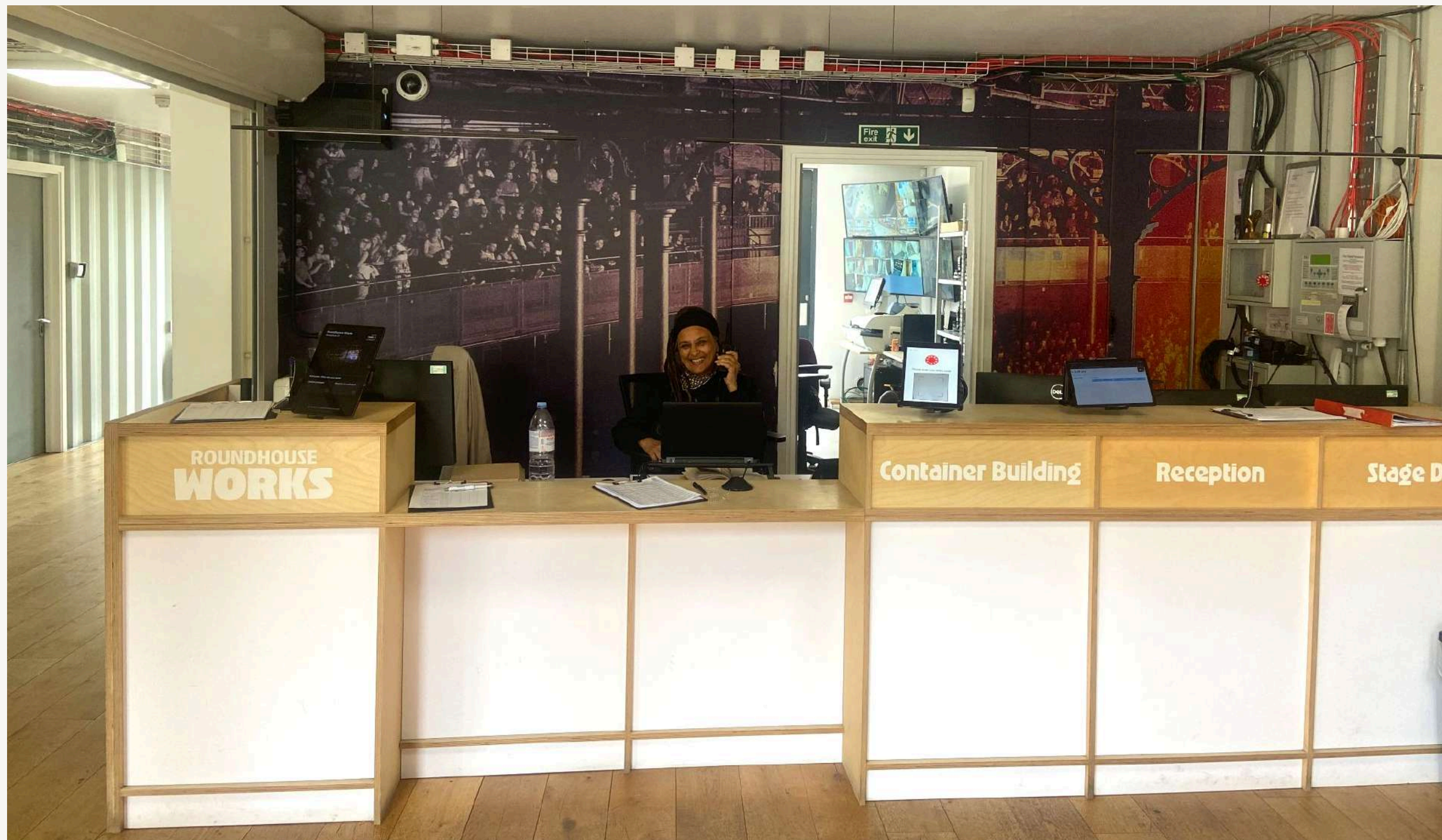
Container Building Entrance

These doors aren't automatic and will need to be opened manually, however we have a wonderful reception team who are stationed 24/7 that will help if needed.



RECEPTION

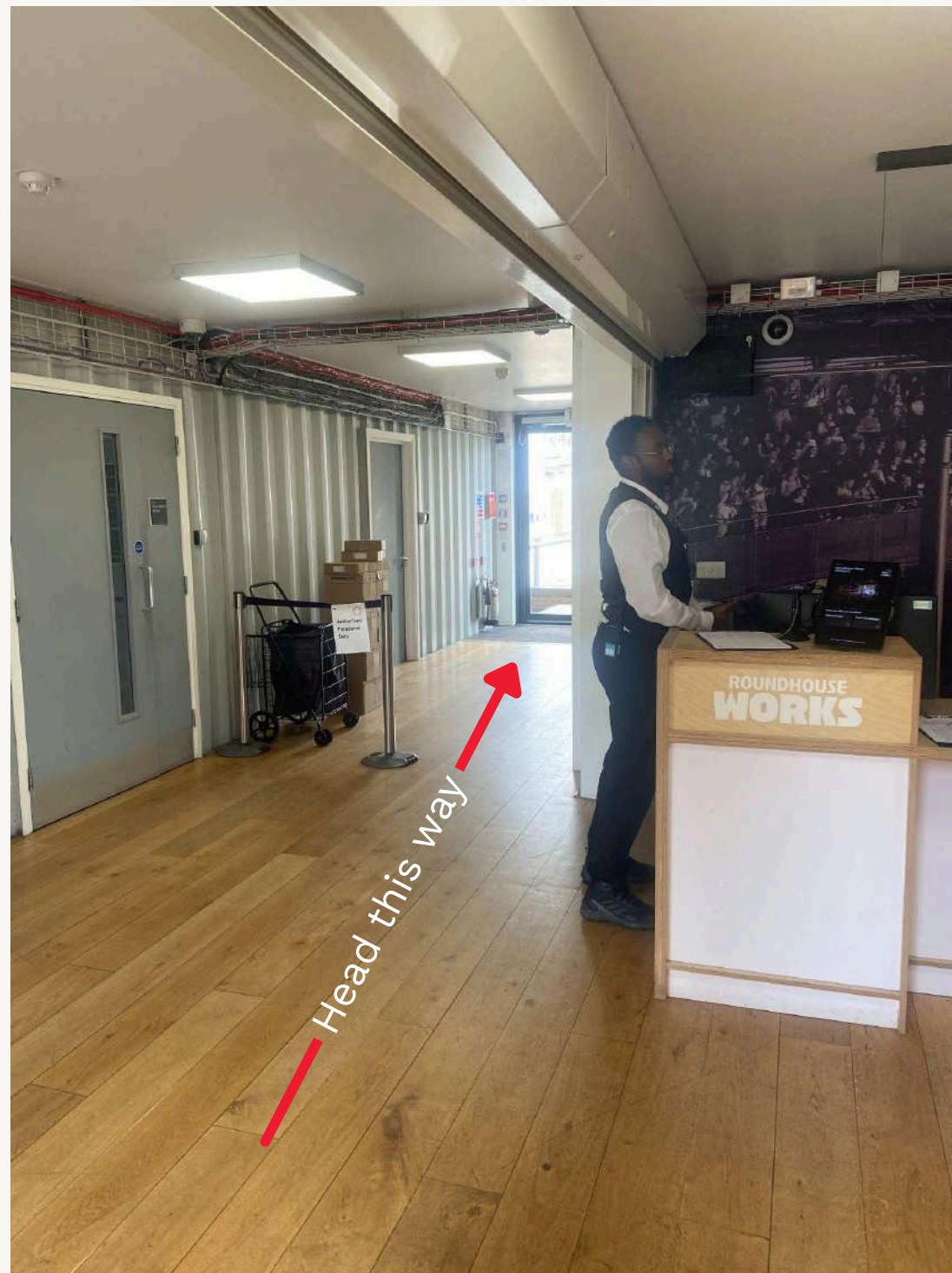
Our wonderful reception team will be there to greet you on arrival where you'll sign in, and a member of staff will meet you if necessary.



Lower desk for wheelchair users

Roundhouse Works

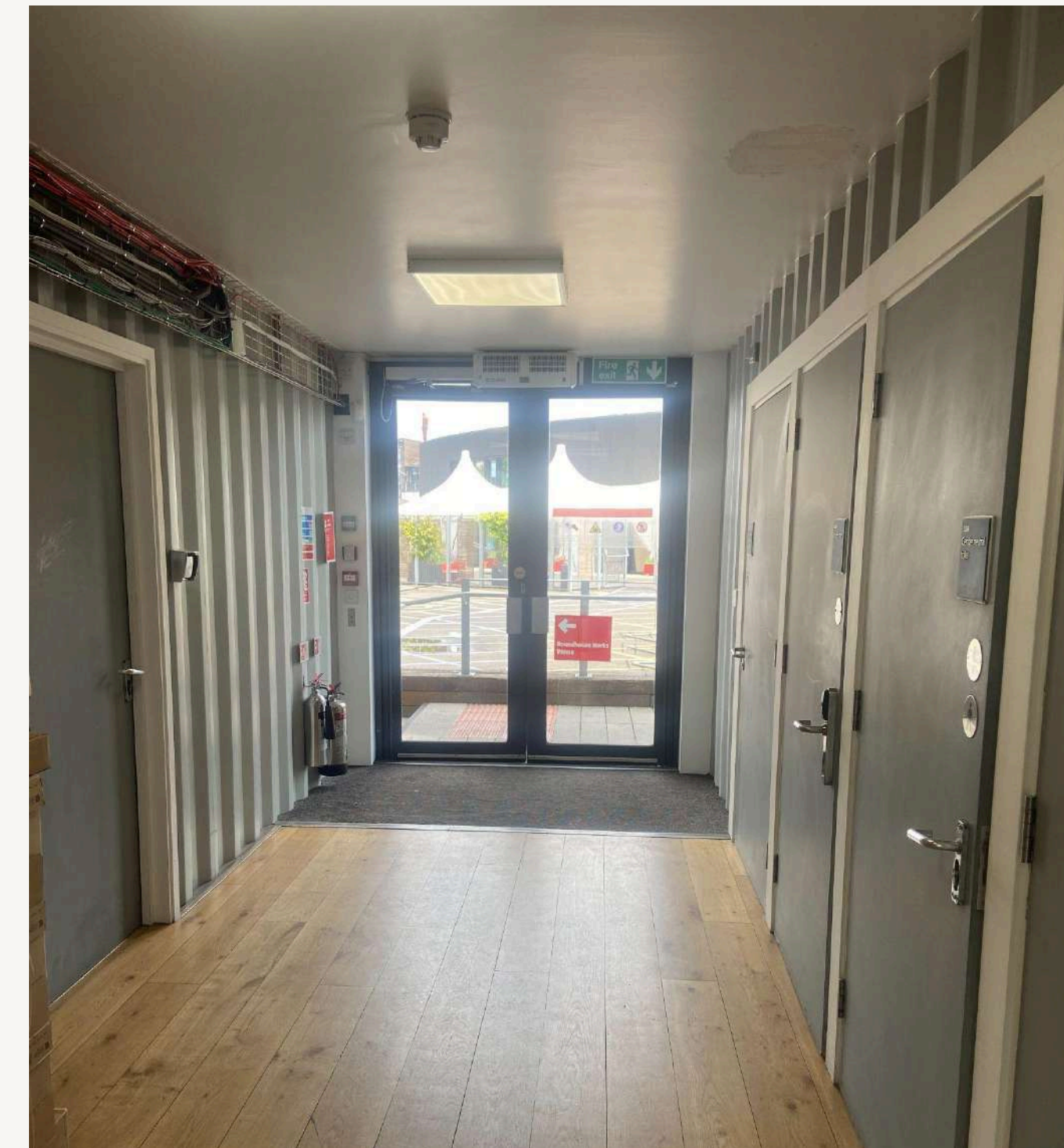
The journey from Reception to Roundhouse Works



Travel left from reception towards the double doors



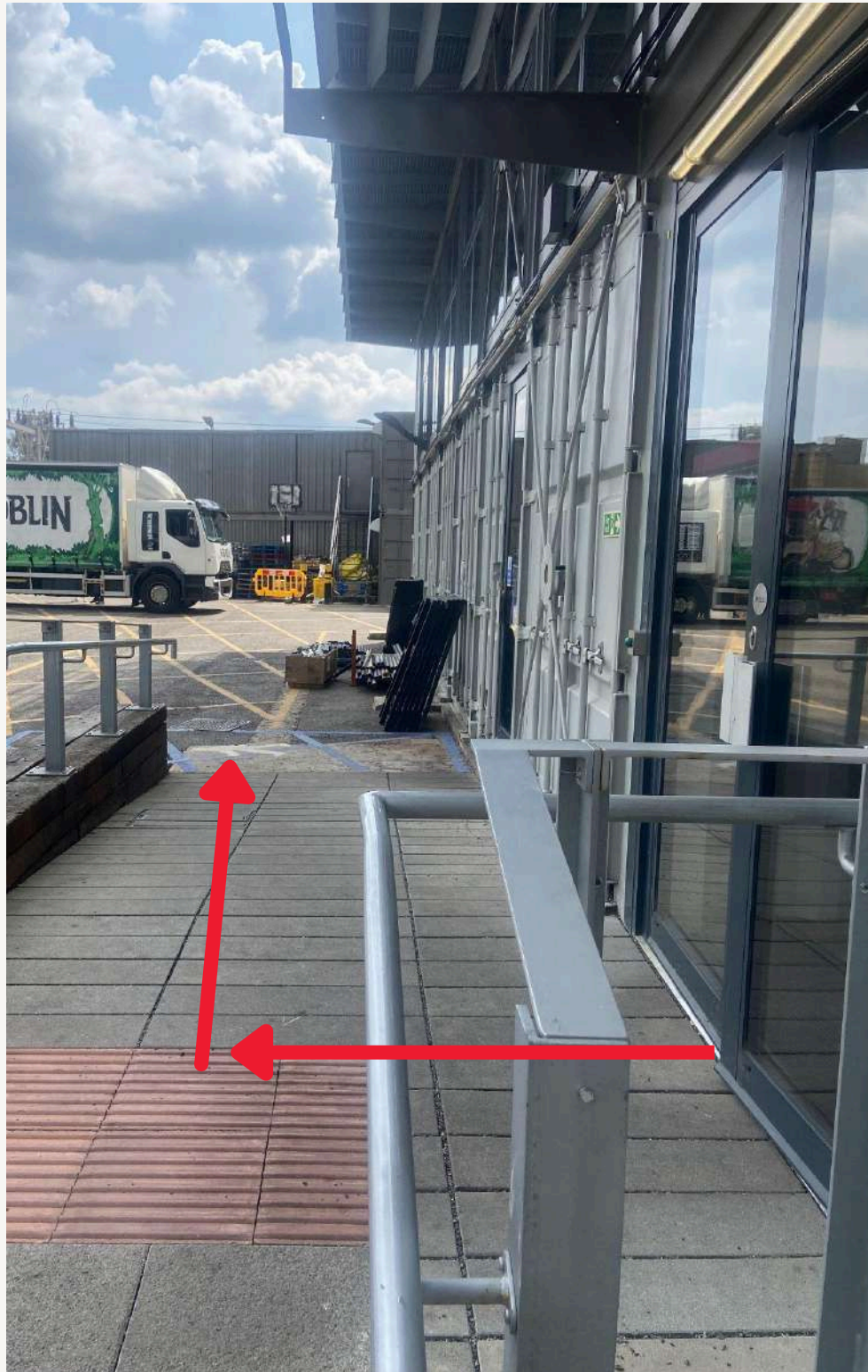
On your right there is a gender neutral accessible toilet



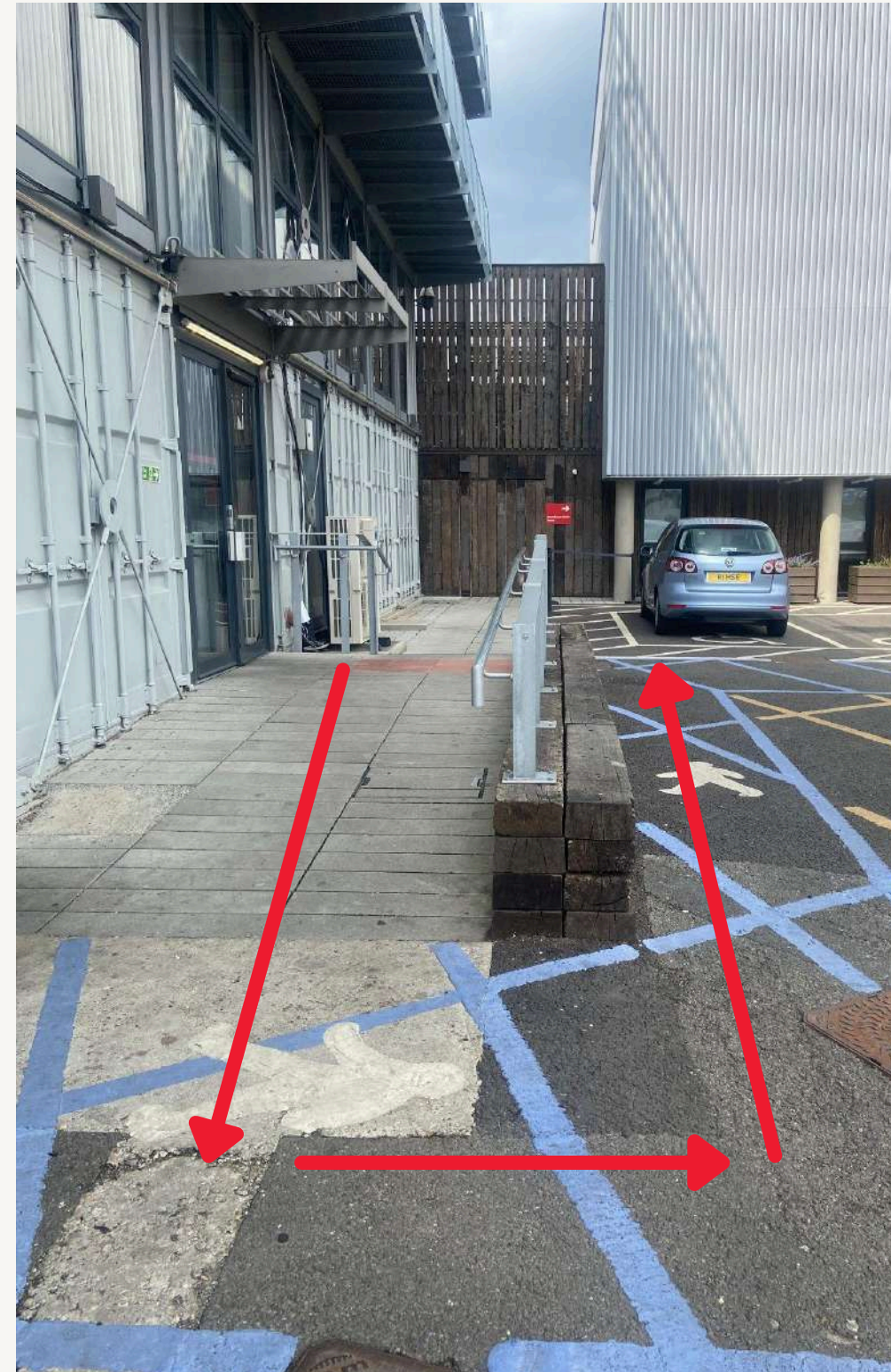
The double doors aren't automatic, so a member of staff or reception will help if needed

Roundhouse Works

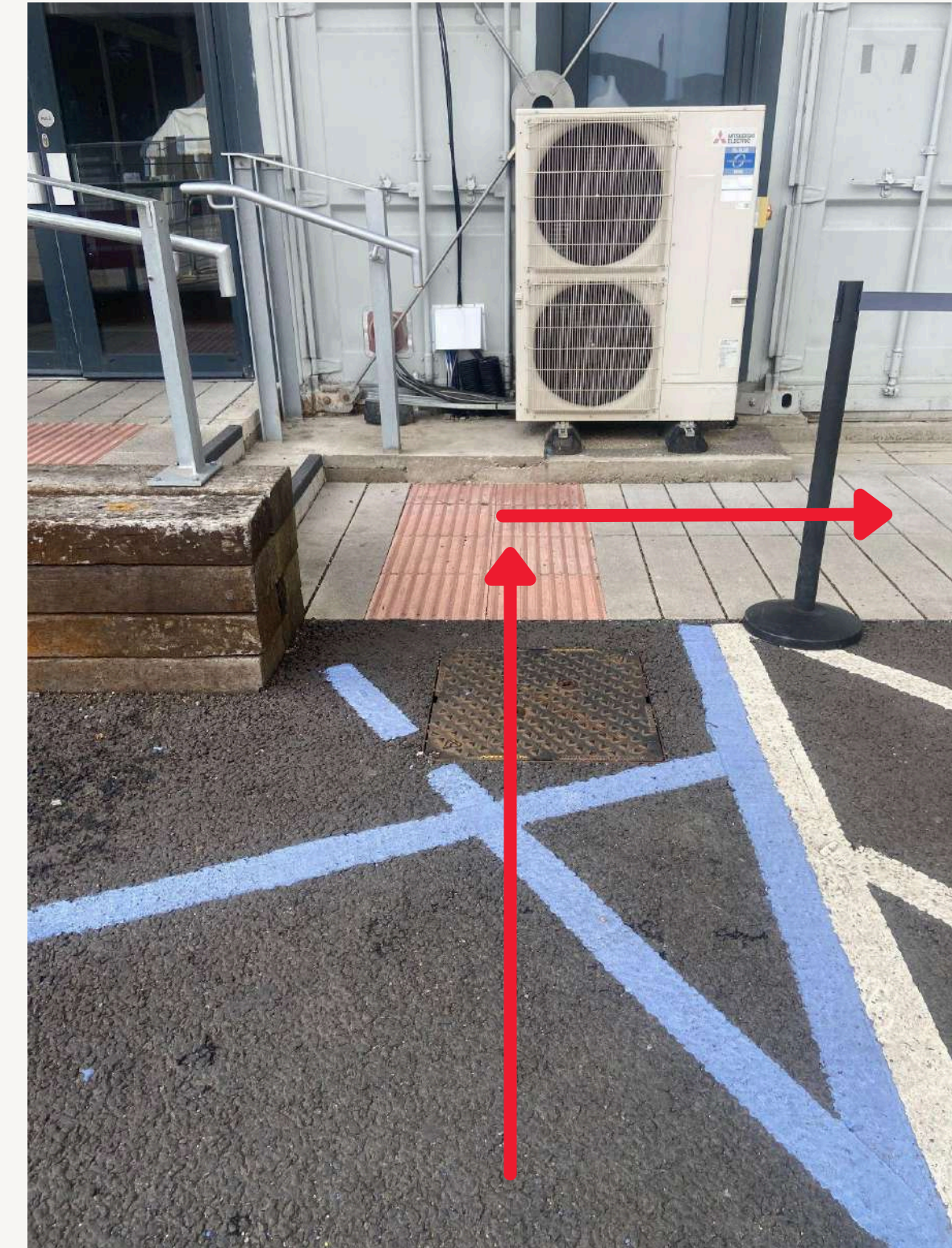
The journey from Reception to Roundhouse Works



Exit the double doors and turn right



Travel down the ramp and follow the blue hatching



At the end of the blue hatching re join the path

Roundhouse Works

The journey from Reception to Roundhouse Works



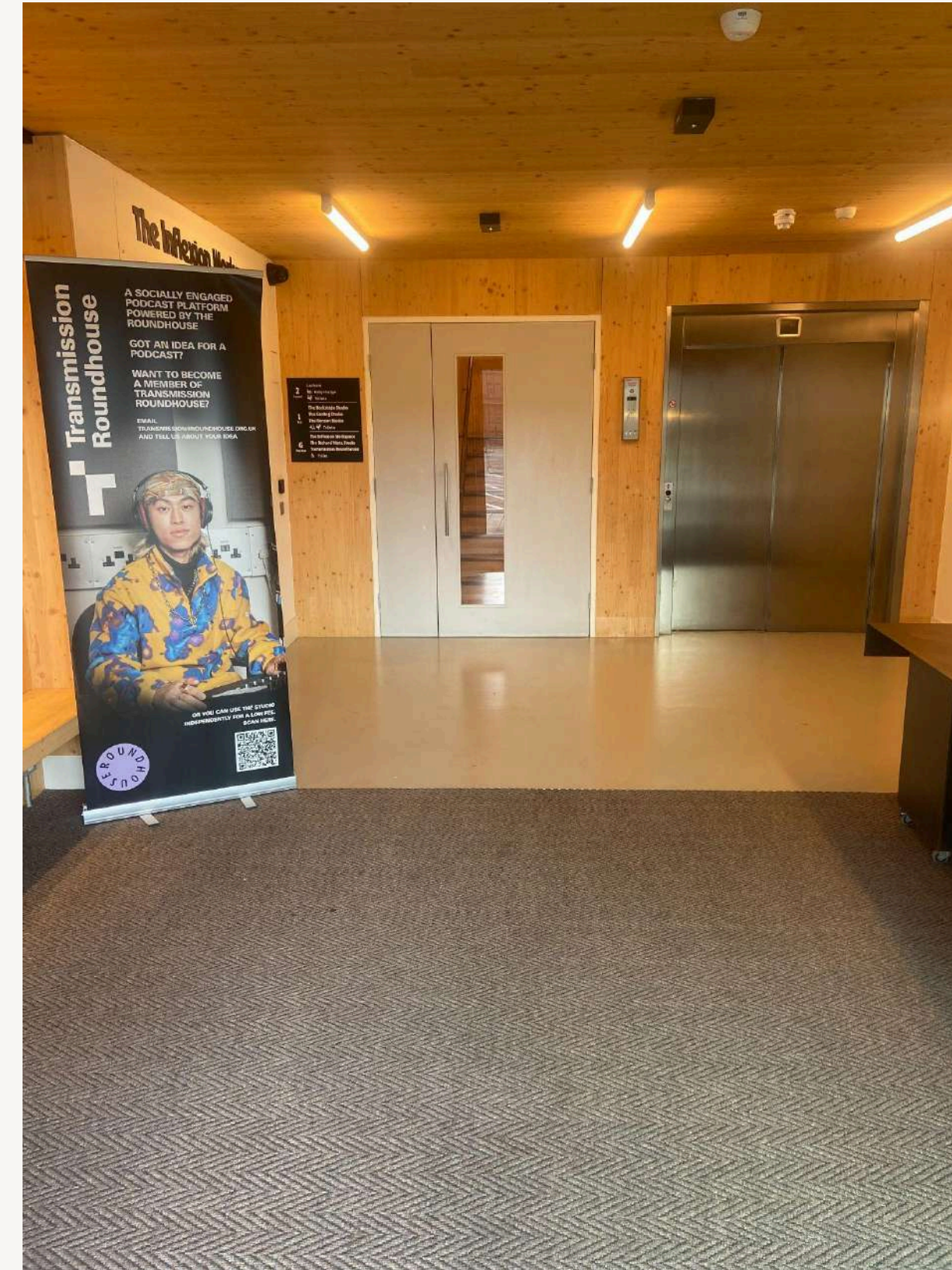
Continue following the path to arrive at
the Roundhouse Works entrance

Roundhouse Works

The journey from Reception to Roundhouse Works



The Roundhouse Works entrance is fully automatic



This is the Roundhouse Works foyer where you can access the lift if needed

BLUE BADGE PARKING

- Our venue has allocated car park spaces for Blue Badge holders.
- To reserve a space please contact **accessbookings@roundhouse.org.uk**
- For security reasons, we will request a few personal details alongside the car registration.
- Upon arrival, you will be asked to sign in to our reception.
- The security team will guide you via a secure gate to your reserved space.
- The details on how to reach our car park will be provided upon confirmation during the booking process.



IN CASE OF EMERGENCY



Fire exit on the external ramp



This sign is attached to the railings in several places on the ramp.

‘Please be aware of the steep turn at the bottom of the ramp into the public pavement’

‘For assistance please call the reception team on **02074246770**’

MAIN BUILDING ENTRANCE

If you are unable to use the Container Building ramp you can access the container offices through the Main Roundhouse Building.

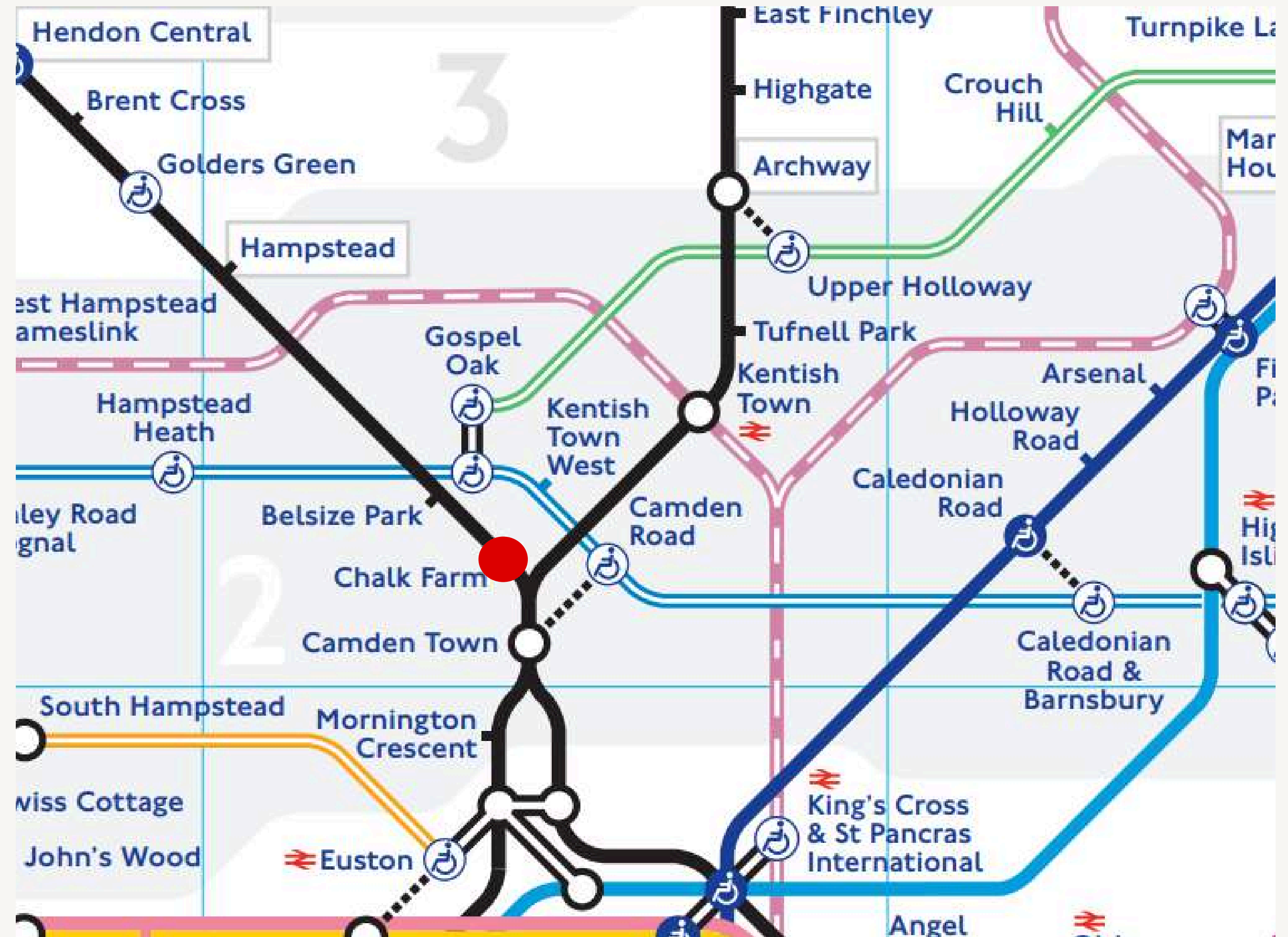
Find out how here at our Main Space
Visual Guide [VISUAL GUIDE](#)

TRANSPORT OPTIONS

The Roundhouse Container Buildings nearest station is Chalk Farm which **is not** wheelchair accessible.

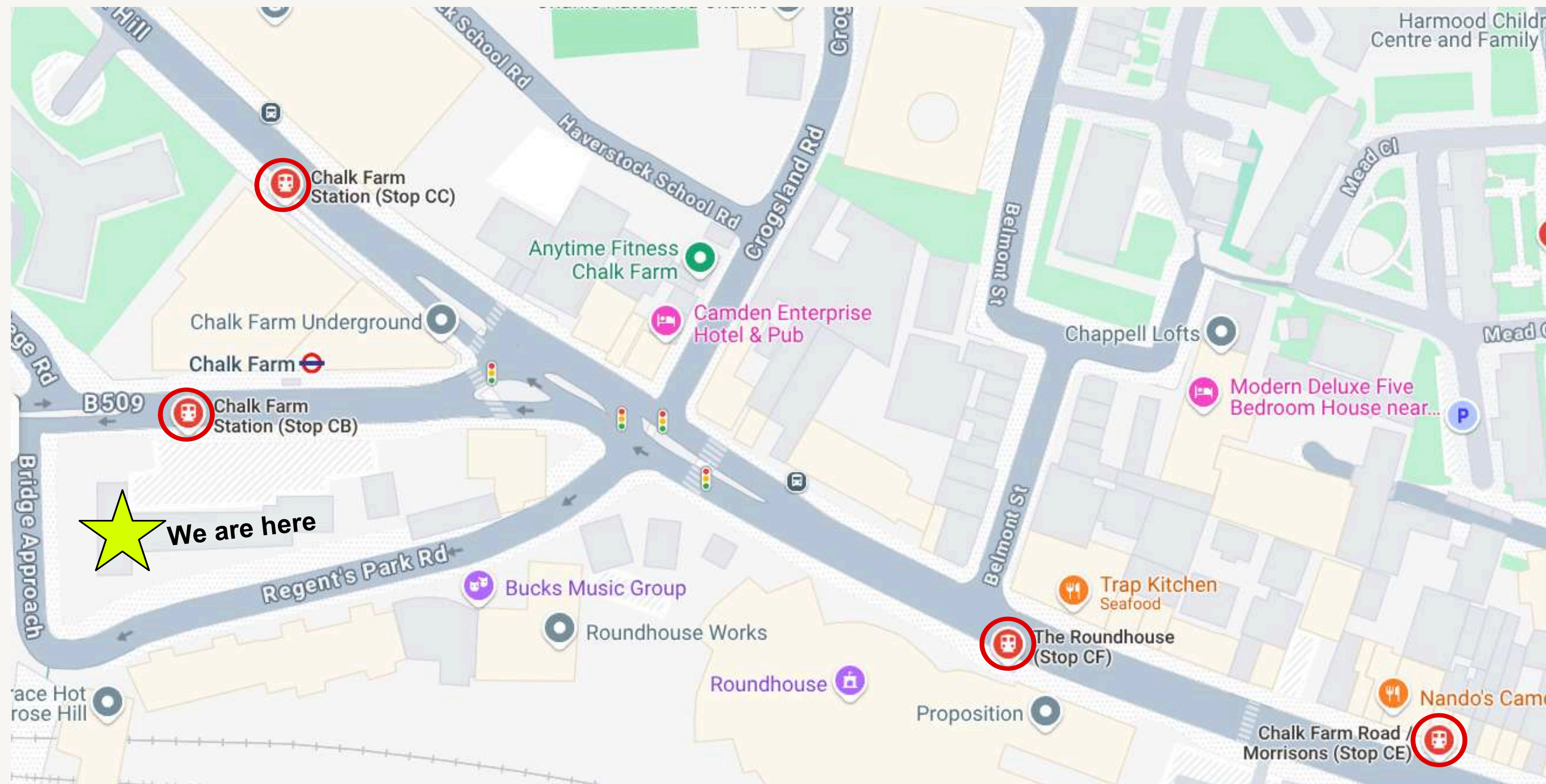
Lots of buses run to and from Chalk Farm Road including the 24, 27, 31, 46, 168 and 393.

Buses to and from Camden include 24, 27, 29, 31, 134, 135, 168, 214, 253, 274 and C2.



[Download TFL accessibility guides and maps](#)

TRANSPORT LOCAL BUS OPTIONS ROUTES



We have lots of bus stops near the Roundhouse which arrive & travel from various locations.

TRANSPORT CAR/TAXI **OPTIONS DROP OFF & PICK UP**

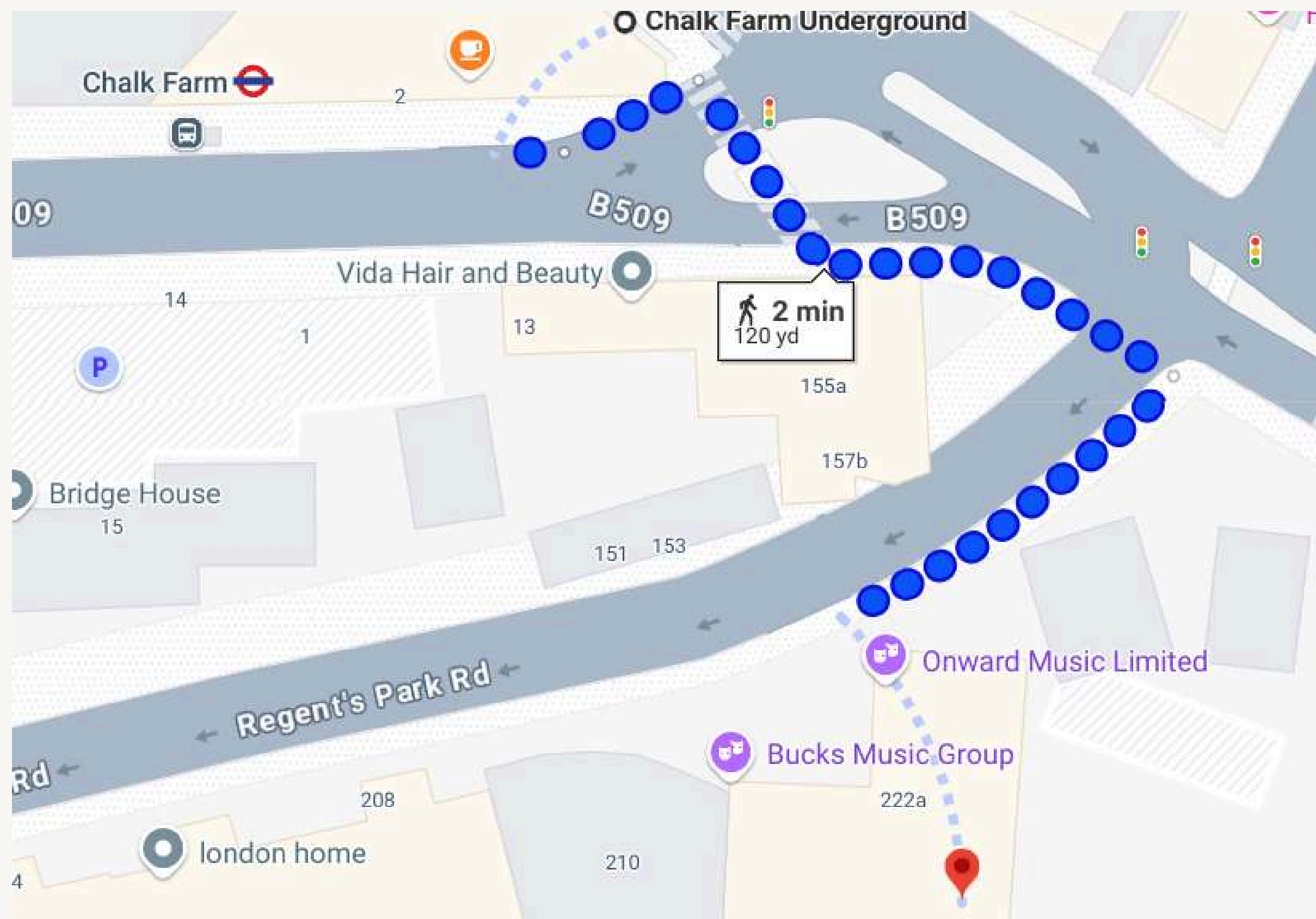
You can be dropped off or picked up at:

212 Regent's Park Road, Chalk Farm, London, NW1 8AW



TRANSPORT ROUTES

Travelling from the Chalk Farm

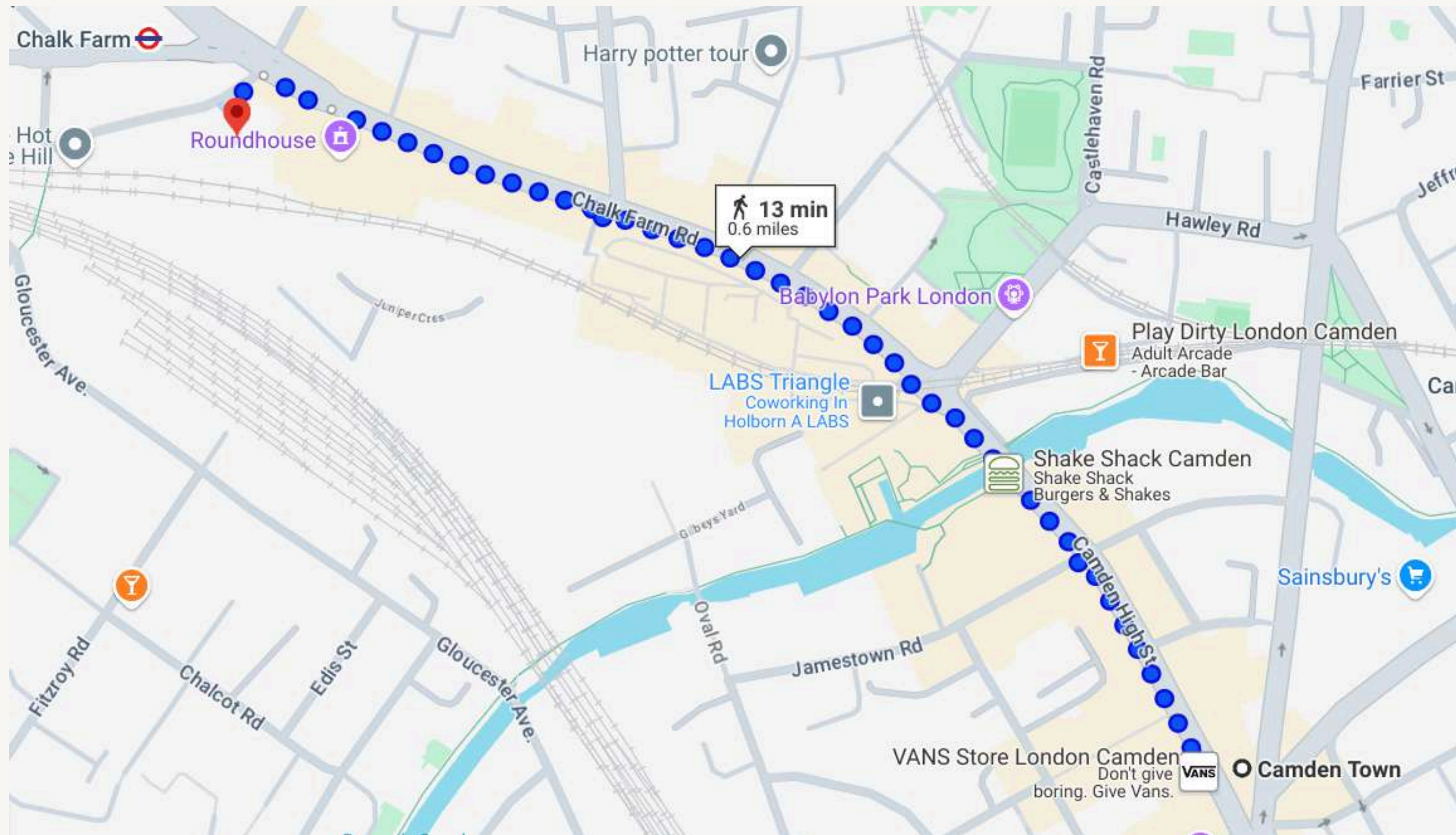


Step free kerb dips at every traffic light junction.

Gradient from the beginning of regents park road is uphill heading towards the container building.

TRANSPORT ROUTES

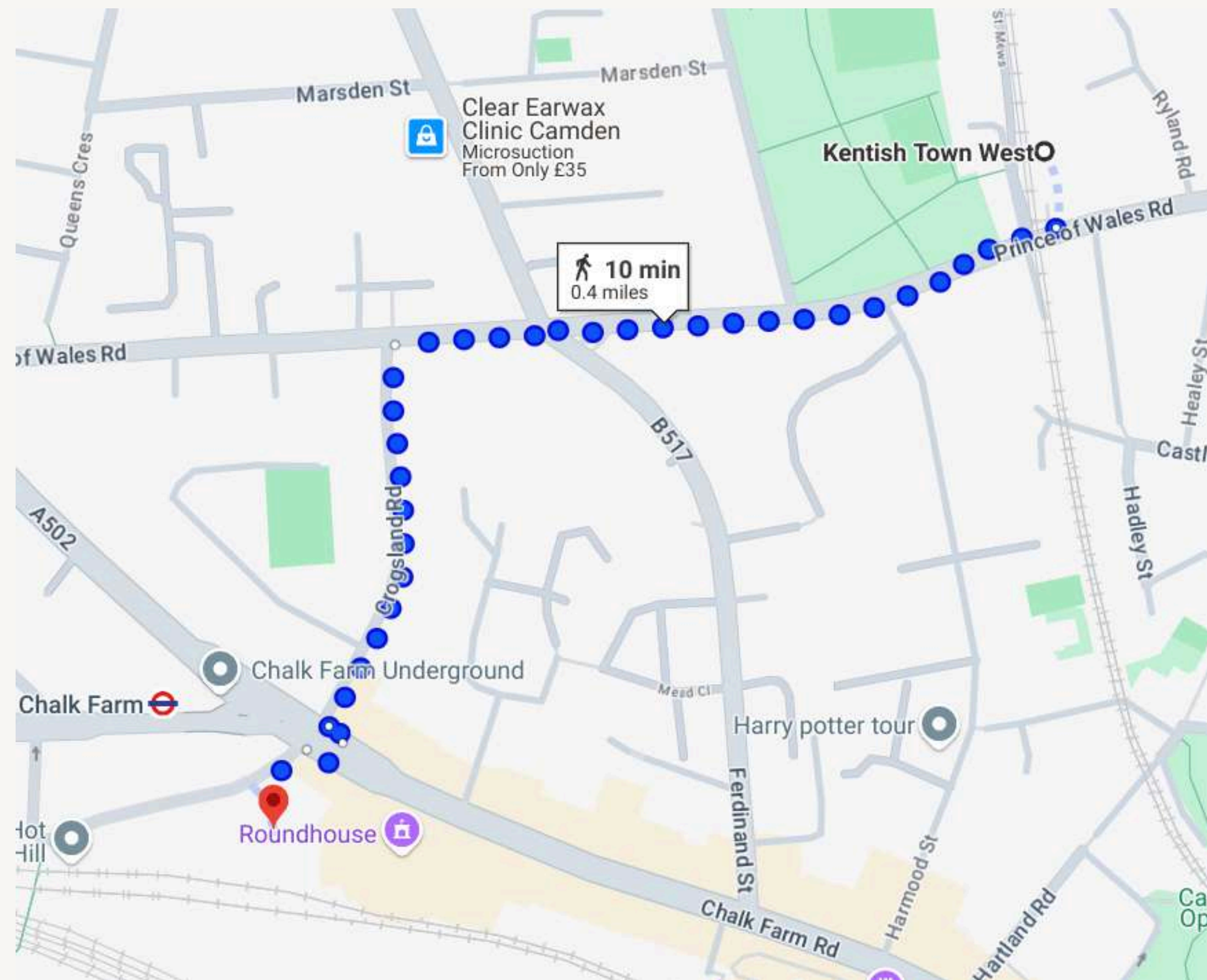
Travelling from the Camden Town



Typically very busy area with limited pavement space

TRANSPORT ROUTES

Travelling from the Kentish Town West



Step free kerb dips at every traffic light junction.

Gradient from the beginning of regents park road is uphill heading towards the container building.

OUR TEAM IS HERE TO HELP

- If you need assistance at any point during your visit, please ask a member of staff or security.
- If you have any questions about your visit to the Roundhouse, you may find the answer on our website.
- For any access needs and to speak to a member of staff ahead of your visit, please get in touch with us by emailing **accessbookings@roundhouse.org.uk**
- Please note that some information in this Visual Story might not apply to your visit.

